

# Cardiopathy Symptoms Diagnosis Based On A Secure Real-Time ECG Signal Transmission

Azmi Shawkat Abdulbaqi<sup>a,\*</sup>, Abbas Abdulazeez Abdulhameed<sup>b</sup>, Ahmed J. Obaid<sup>c</sup>

<sup>a</sup>University of Anbar, College of Computer Science & Information Technology, Iraq

<sup>b</sup>Mustansiriyah University, College Science, Computer Science Department, Iraq

<sup>c</sup>University of Kufa, Faculty of Computer Science and Mathematics, Iraq

---

## Abstract

Electroencephalography (EEG) signals are commonly used to identify and diagnose brain disorders. Each EEG normal waveform consists of the following waveforms: Gamma( $\gamma$ ) wave, Beta ( $\beta$ ) wave, Alpha ( $\alpha$ ), Theta ( $\theta$ ), and Delta ( $\delta$ ). The term Neurological Diseases " Nur Dis " is used to describe a variety of conditions that affect the nervous Epilepsy, neuro infections (bacterial and viral), brain tumors, cerebrovascular diseases, Alzheimer's disease, and various dementias are all examples of neurological disorders. Encephalitis is one of the illnesses that affects the brain. The EEG signals used in this manuscript were from the CHB-MIT Scalp EEG database. The discrete wavelet transforms (DWT) were utilized to extract characteristics from the filtered EEG data. Finally, classifiers such as K Nearest Neighbor (KNN) and Support Vector Network (SVN) were used to categorize the EEG signals into normal and pathological signal classes using all of the computed characteristics. In order to categorize the signal in a normal and anomalous group, the KNN and SVN classifiers are employed. For both classifiers, performance assessments (exactitude, sensitivity and specificity) are determined. KNN classifier accuracy is 71.88%, whereas SVN classifier accuracy is 81.23%. KNN Sensitivity is 80.14% and the SVN Sensitivity is 77.31%, respectively. The KNN classification specificity is 69.62% and the SVN classification specificity is 98%. Both classifiers performance is evaluated using the confusion matrix.

**Keywords:** Discrete Wavelet Transform (DWT), Support Vector Network (SVN).  
Electroencephalography (EEG) signals, K-Nearest Neighbor (KNN),

## 1. Introduction

EEG is a brain record and may be simply captured in patient scalp contact using invasive electrodes. EEG tracks changes in brain neurons in ionic current voltage. EEG is most often utilized for the diagnosis of epilepsy which results in abnormalities in EEG data. Diagnosis also includes sleep problems, depth of anesthesia, coma, encephalopathy, and brain death. EEG was a diagnostic technique in the first line for tumors, stroke and other concentrated brain disorders. Usually a 20–30-minute EEG recording (plus preparation time) [1]. Brain disorders do not have specific symptoms, as their physical condition varies from patient to patient. EEG is one of the most significant diagnostic tests for epilepsy. Usually a 20–30-minute EEG recording (plus preparation time). A test to monitor electrical activity using small metal disks in the brain (electrodes) [1][2].

EEG is regularly used for the determination of change which may, given clinical conditions, be important to diagnoses of brain disorders, including epilepsy and any seizures. The diagnosis or therapy of EEG may also be beneficial. Routine EEG is frequently insufficient to identify the diagnosis or treatment route. An EEG might be tried in such a condition during a seizure. This is called an ictal record, rather than an inter-ictal record referring to the EEG inter convulsive record. Generally, a long EEG with a time- and audio-sync capture is done for ictal capture [2][3].

In traditional scalp EEG, electrodes are recorded on the scalp using conductive gel or paste, generally after mild abrasion is made in the scalp area to minimize resistance caused by dead skin cells. Typical electrodes are used in many systems, each with a separate wire. Certain systems employ electrical caps or networks in which electrodes are integrated, particularly where high electrode density arrays are required. The International 10-20 system for most clinical and research purposes specifies electrode placements and names [4].

A lesser number of electrodes is normally used to capture EEG from neonates. Additional electrodes may be used in the typical setup if clinical use and research need greater spatial resolution for some region of the brain. Every electrode is connected by means of a common electrode system via the other input of each differential amp. (One amplifier per pair of electrodes). These amplifiers improve the tension between the active and the reference electrodes (typically 1.000 to 100.000 times or a voltage gain of 60–100 dB).

The signal will then be filtered into analog EEG and when the deflection of the plumb goes below the manuscript the EEG signal will be released [5]. Most of the EEG systems are digital today, though. The amplified signal is transformed via an analog to digital converter after a non-aliasing filter. The mean analog to digital sample at the scalp EEG clinical location is 256–512 Hz. Sampling rates of up to 20 kHz are used for certain purposes of research [6].

A number of activation techniques may be employed throughout the recording process. These techniques may lead to normal or abnormal EEG activity which cannot be detected otherwise. These include: hyperventilation, photic (strobe light) stimulation, ocular closure, mental activity, and privation of sleep and sleep. The normal patient seizure medicines may be removed during (inpatient) epilepsy monitoring. Digital EEG signal may be recorded and filtered for monitoring electronically. Typical values are 0.5-1 Hz and 35–70 Hz for both high-pass filters and low-pass filters [7][8]. The manuscript are organized as follows: Introduction presented in Section One.

System Methodology introduced in Section Two. EEG Signals Processing described in Section Three. And finally, Experimental Results presented in Section Four.

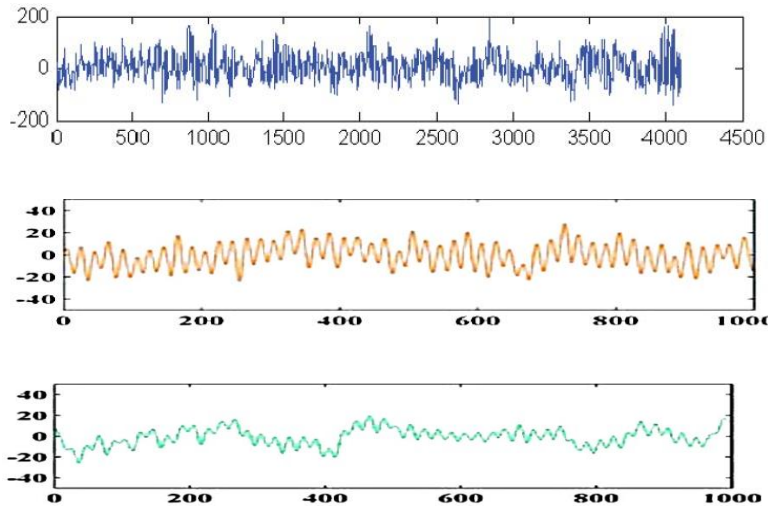


Fig. 1 Various Records of Normal EEG Signals

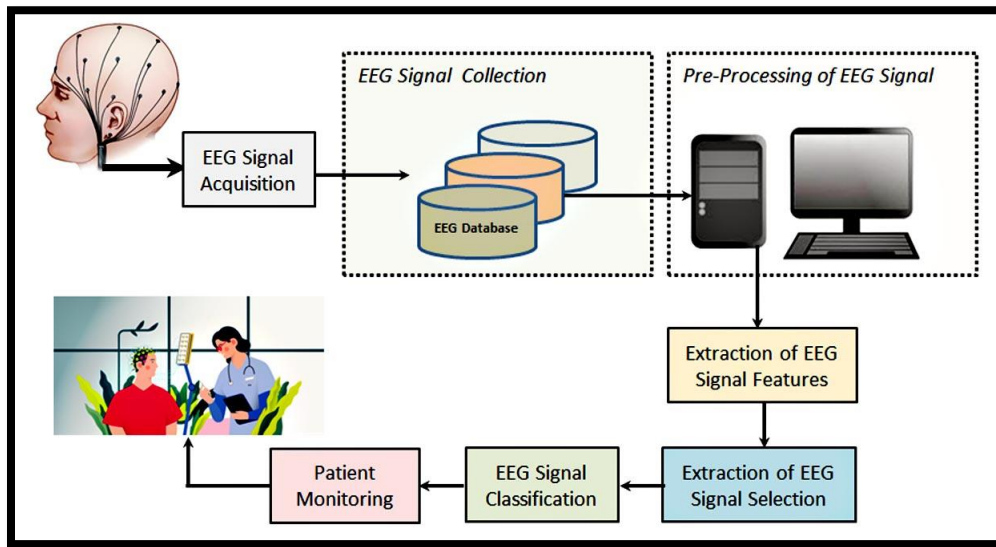


Fig. 2, Overall System Scheme

## 2. System Methodology

The following flow chart was followed to implement this application:

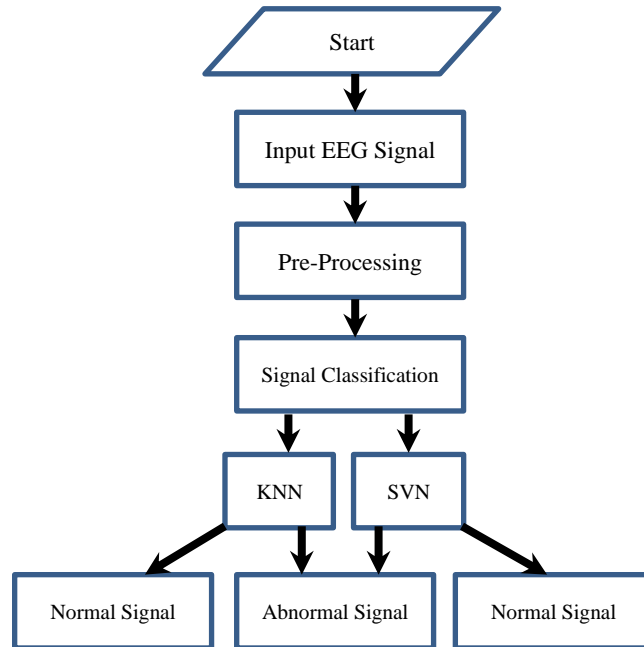


Fig 3 Flowchart of the proposed Methodology

### 3. EEG Signals Processing

EEG Signal Processing has 4 basic steps:

- Input: any biomedical signal can be entered as a system input. The input signal can be clinical, CHB-MIT Scalp EEG dataset, or direct recordings attained from the patient [9].
- Pre-Processing of EEG Signal: EEG signal has different types of noise which reduces the quality of signal providing interruption in further processing. Hence, it becomes necessary to remove these unwanted signals in order to increase the overall accuracy [10].
- Feature Extraction of EEG Signal: In order to attain the desired information, features are extracted from the filtered signals. These features act as input to the classifiers [11].
- Classification of EEG Signal: The main goal of any classifier is to categorize the signals into groups & finally reach the decision stage [12].

#### 3.1 Input EEG Signals

In this application, EEG signals were taken from the CHB-MIT Scalp EEG dataset. At the time of signal acquisition, these signals were in .eeg, .data, or .txt format. To load the signals in MATLAB, they were converted to mat format. 24 EEG signals were taken out of which 12 were normal signals & remaining 12 were abnormal signals. The time duration of all the signals was 1 minute & the sampling rate of about 360 Hz respectively [12][13].

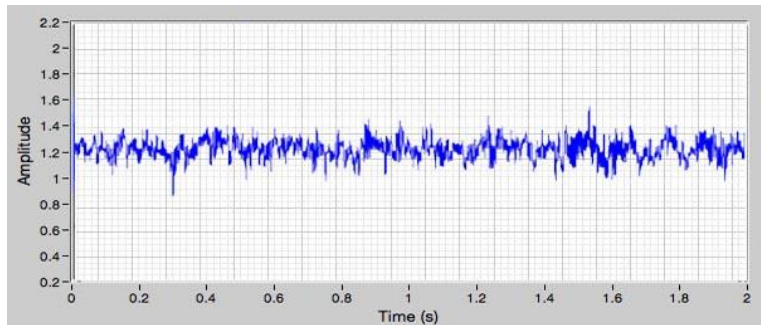


Fig. 3, Normal EEG Signal

### 3.2 Pre-Processing of EEG Signal

EEG signal includes many noise kinds including baseline noise, power line noise, high frequency noise, noise with equipment, muscle noise and etc. EEG is mostly affected by power line & baseline noise. Frequency of baseline noise is about 0.5 Hz [13]. Presence of such type of noise degrades the overall quality & accuracy. So, to improve the accuracy this unwanted noise must be removed. In this manuscript, zero phase low pass filter was used for the removal of baseline noise [14].

To attain the filtered EEG signal, following steps were implemented;

- 1) Zero phase signal was passed to the original EEG signal
- 2) The attained EEG signal (from step 1) was then subtracted from original signal
- 3) The EEG signal attained after step 2 is the filtered EEG signal [15].

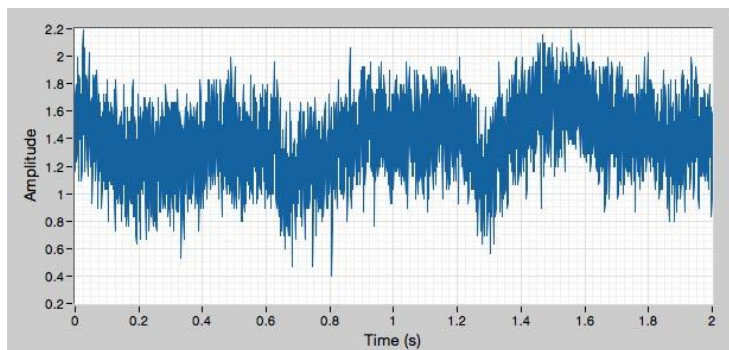


Fig. 5, The Input EEG signal is fed a Zero Phase Signal.

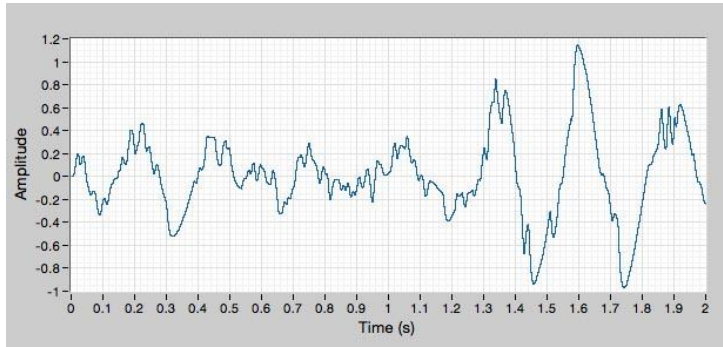


Fig. 6, The Filtered Input EEG Signal

### 3.2.1 Zero Phase Low Pass Filter) ZePh LPF)

Low-frequency transmissions are permitted whereas ZePh LPF blocks high-frequency frequencies. Such filters can be used to store filtered signal properties. It can reduce the noise influence of the original signal [16].

ZePhLPF does not reduce signal amplitude; instead, it eliminates undesirable signals. This sort of filter may filter both forward and backward. It filters signals in the forward direction, then reverses and filters the signal once again. This sort of filtering is applied to the original signal in order to achieve zero phase distortion [17].

### 3.3 Feature Extraction

To attain the desired information from the filtered signal, features are extracted. Here, the 1<sup>st</sup> order statistical features of EEG are mean, median & standard deviation whereas higher order statistical features are kurtosis, skewness & variance respectively. In this manuscript, the following features were considered;[18]

- 1) Mean: it is defined as the average of total number of signals.
- 2) Variance: it is described as the ration of sum of square of each term from mean to the number of terms in distribution.

$$\text{Variance} = \frac{\sum_{i=1}^n (X_i - X_{\text{avg}})^2}{n-1} \quad (1)$$

- 3) Standard Deviation: it is described as the amount of deviation.
- 4) Skewness: is defined as the distribution of asymmetry or deviation in comparison with normal distribution.
- 5) Kurtosis: it is described as the maximum (peak) value of EEG signal.
- 6) Highest frequency: This is the maximum value of the EEG signal's frequency.
- 7) Maximum Amplitude: This is the amplitude of the EEG signal with the greatest value [19][20].

$$\text{Skewness} = 3 * (\text{Mean} - \text{Median}) / \text{S.D} \quad (2)$$

$$\text{Kurtosis} = \frac{\sum_{i=1}^N (y_i - \bar{y})^4}{N} \quad (3)$$

### 3.3.1 Discrete Wavelet Transform (DWT)

The majority of biological signals are non-stationary. DWT may be used to evaluate these types of signals. This approach utilizes two types of filters: low-pass and high-pass filter to split signals into distinct frequency ranges [21]. Coefficients of approximation are the result of a low pass filter (cA). Details of high-pass filter output coefficients (cD). The characteristics from the filtered signal were extracted using DWT in this manuscript [22].

### 3.3.2 Wavelet Selection

One of the most essential jobs in DWT is to choose the right wavelet and the right number of decomposition stages. The sort of wavelet to choose is determined on the nature of the signal. To evaluate signals, wavelets as in, Haar, Daubechies, Symlets, Coiflets, Morlet, Mexican Hat, and others can be utilized. The Db4 wavelet was utilized to breakdown the signals in this manuscript [23].

The characteristics following were calculated: maximum amplitude, skewness, maximum frequency, kurtosis standard deviation, mean, and variance.

The set of calculated features were given as input to KNN & SVN for the classification of signals [24].

$$\text{Standard Deviation} = \frac{1}{N-1} \sum_{i=1}^N (X_i - \mu_x) \quad (4)$$

$$\text{mean} = (X_1 + X_2 + \dots + X_n) / N \quad (5)$$

## 3.4 EEG Signals Classification

Classifiers in EEG signal processing are utilized to classify the signals in a proper group. Classifiers such as ANN, SVN, KNN, Fuzzy Logic System, LDA etc are widely used to classify the signals. In this manuscript, the classifiers such as KNN & SVN were utilized to classify the signals in a group of signal normality and abnormality [25].

### 4.3.1 K Nearest Neighbor (KNN)

Classifying algorithms is one of the simplest kinds. The minimal distance is determined by this method of categorization [26].

Basically, to perform the discriminant analysis, KNN classifier was developed. The distance equation (6) is given by;

$$\text{Distance } d(x, y) = \sum_{i=1}^N \sqrt{(x_i - y_i)^2} \quad (6)$$

The KNN method compares data from the training and test sets. The "K" value (Total neighborhood number) should be a small integer in this case. If we choose a large value for K, it is possible that the signals will be misclassified. The value of K in this text was set to 1[27].

### 4.3.2 Support Vector Network (SVN)

SVN is learning algorithm which is widely used for classification & regression. It can solve both binary classification & multiclass problems.

Let the training set be  $(x_i, y_i)_{i=1, \dots, I}$

Where, " $x_i \in R^d$ " and " $y_i \in (-1, 1)$ " are separated by hyper plane defined as  $(w \cdot x + b = 0)$ , where,  $w$  = orthonormal vector of Weight related to hyper plane and  $b$  = any constant term. Separation of data using hyper plane  $(w, b)$  is performed by using the function;  $f(x) = \text{sgn}(w \cdot x + b)$ .

The following equation is used for input information if the hyper plane optimizes the margin;  $y_i (w \cdot x + b) \geq 1$  for all values of  $I$ . The distance between hyper plane and data point is calculated using the following equation (7):

$$d((w \cdot b), x_i) = [(y_i (x_i \cdot w + b)) / \|w\|] \geq (1 / \|w\|) \quad (7)$$

Accuracy is the phrase used to describe a system's overall performance. The accuracy is calculated as follows:

$$\text{Acc} = [(TP + TN) / (TP + TN + FP + FN)] * 100 \quad (8)$$

The ratio of the total number of correctly defined events to the total number of occurrences is known as sensitivity. Sensitivity is defined mathematically as[30];

$$\text{Se} = [TP / (TP + FN)] * 100 \quad (9)$$

Specificity is well-described as the ration of number of non-events which are rejected correctly to the total non-events count. Mathematically, specificity is given as; [31]

$$\text{Sp} = [TN / (TN + FP)] * 100 \quad (10)$$

Were,

TP stands for True\_Positive (if typical EEG signals are classified as such (Normal),  
FN stands for False\_Negative (if typical EEG signals are labeled as such (Abnormal),  
FP stands for False\_Positive (if typical EEG signals are labeled as such (Abnormal),  
TN stands for True\_Negative (if typical EEG signals are labeled as such (Normal) [17][32-35].

## 4. Experimental Results



In this manuscript, features were extracted by utilizing discrete wavelet transform. To categorize the entering signals as normality & abnormality class, classifiers such as SVN & KNN were used. Specificity, sensitivity, and accuracy were considered for each classifier. The accuracy of KNN was better for classification of signals as compared to SVN. Hence, we conclude that although KNN is one of the simplest types of algorithms, it can be widely for the classification purposes in biomedical field. The table given below shows the percentage of accuracy, sensitivity & specificity for both KNN & SVN classifiers.

Table 1, Matrix Confusion

Normality	True_Positive	False_Positive
Abnormality	False_Negative	True_Negative

Table 2, KNN Matrix Confusion

TP = 70%	FP = 30%
FN = 20%	TN = 80%

Table 3, SVN Matrix Confusion

TP = 100%	FP = 0%
FN = 45%	TN = 55%

Table 4, Performance Evaluation for SVN and KNN

Performance	SVN	KNN
Specificity	98%	69.62%
Accuracy	81.23%	71.88%
Sensitivity	77.31%	80.14%

## 5. Conclusion

The CHB-MIT Scalp SEG database tests this technique on 48 EEG signals collected. The retrieved characteristics were the powerful features suitable for grading. The classification of signals into normal and pathological groups is utilized by both KNN and SVN classifications. The confusion matrix has shown to be one of the efficient methods for calculating performance metrics for both classifiers. For classification in normal and abdominal groups, the experimental findings of the SVN based classifier have provided the maximum accuracy of 81.23% percent.

## References

- [1] B. Mohamad, and D. Usman, "Standardization and its effects on K-Means clustering algorithm," Research Journal of Applied Sciences, Engineering and Technology, vol. 6, no. 17, pp. 3299-3303, 2013.

- [2] L. Xie, Q. Tian, and B. Zoang, "Feature normalization for part-based image classification," IEEE International Conference on Image Processing, 2013.
- [3] H. Zhang, H. Lin, and Y. Li, "Impacts of feature normalization on optical and SAR data fusion for land use/land cover classification," IEEE Geoscience and Remote Sensing Letters, vol. 12, no. 5, pp. 1061-1065, 2015.
- [4] B. K. Singh, K. Verma, and A. S. Thoke, "Investigations on impact of feature normalization techniques on classifier's performance in breast tumor," International Journal of Computer Applications, vol. 116, no. 19, pp. 11-15, 2015.
- [5] K. P. Kuntal, and K. S. Sudeep, "Preprocessing for image classification by convolutional neural networks," IEEE International Conference on Recent Trends in Electronics Information Communication Technology, 2016.
- [6] A. S. Easa, and W. Arabo, "A Normalization Methods for Backpropagation: A Comparative Study," Science Journal of University of Zakho, vol. 5, no. 4, pp. 319-323, 2017.
- [7] M. Kociolek, M. Strlecki, and S. Szymajda, "On the influence of the image normalization scheme on texture classification accuracy," Signal Processing: Algorithms, Architectures, Arrangements, and Applications, 2018.
- [8] Harinder, and R.K. Sherma, "DWT based epileptic seizure detection from EEG signal using k-NN classifier," International Conference on Trends in Electronics and Informatics, 2017.
- [9] J. W. C. Medithe, and U. R. Nelakuditi, "Study of normal and abnormal EEG," International Conference on Advanced Computing and Communication Systems, 2016.
- [10] E. K. St Louis, and L. C. Frey (Eds), "Electroencephalography (EEG): An Introductory Text and Atlas of Normal and Abnormal Findings in Adults, Children, and Infants", Chicago, IL: American Epilepsy Society, 2016.
- [11] P. Ekman, "Basic emotions", Handbook of cognition and emotion, pp. 45-60, 1999.
- [12] J. A., Russell, "A circumplex model of affect," Journal of Personality and Social Psychology, vol. 39, no. 6, pp. 1161-1178, 1980.
- [13] M. Mikhail, K. El Ayat, J. A. Coan, J. J. Allen, "Using minimal number of electrodes for emotion recognition using brain signals produced from a new elicitation technique," International Journal of Autonomous and Adaptive Comm. System, vol. 6, no. 1, pp.80-97, 2013.
- [14] N. Jatupaiboon, S. Pangum, and P. Israsena, "Emotion classification using minimal EEG channels and frequency bands," 10th International Joint Conference on Computer Science and Software Engineering, pp. 21-24, 2013.
- [15] Abdulbaqi A.S. et al. (2019)," Recruitment Internet Of Things For Medical Condition Assessment: Electrocardiogram Signal Surveillance), Special Issue, AUS Journal, Institute of Architecture and Urbanism, University of Austral de Chile, pp. 434-440.
- [16] J. Zhang, M. Chen, S. Zhao, S. Hu, Z. Shi, and Y. Cao, "Relief F-based EEG sensor selection methods for emotion recognition," Sensors, vol. 16, no. 10, 2016.

- [17] S. Kul, P. O. Durdu, and O. Akbulut, "Performance Comparison of EEG Channels in Emotion Recognition," 27th Signal Processing and Communications Applications Conference (SIU), 2019.
- [18] S. Koelstra, et al., "DEAP: A Database for Emotion Analysis; Using Physiological Signals," IEEE Transactions on Affecting Computing, vol. 3, no. 1, pp.18-31, 2012.
- [19] R. Jenke, A. Peer, M. Buss, "Feature extraction and selection for emotion recognition from EEG" IEEE Transactions on Affective Computing, vol. 5, no. 3, pp. 327-339, 2014.
- [20] Abdulbaqi, A.S., Ismail Yusuf Panessai, "Efficient EEG Data Compression and Transmission Algorithm for Telemedicine", Journal of Theoretical and Applied Information Technology (JATIT), Feb. 2019, Vol.97. No 4.
- [21] Abdulbaqi, A.S. et al., "Robust multichannel EEG Signals Compression Model Based on Hybridization Technique", International Journal of Engineering & Technology, 7 (4), (2018) 3402-3405.
- [22] S. Theodoridis, and K. Koutroubas, Pattern Recognition, 4th Edition, Academic Press, 2008.
- [23] G. W. Milligan and M. C. Cooper, "A study of standardization of variables in cluster analysis," Journal of Classification, vol. 5, pp. 181–204, 1988.
- [24] C. W. Hsu, C. C. Chang, and C. J. Lin, "A practical guide to support vector classification" Tech. Rep., 2003.
- [25] J. Han, M. Kamber, and J. Pei, Data Mining: Concepts and Techniques. San Mateo, CA, USA: Morgan Kaufmann, 2006.
- [26] L. Fonseca, "The Impact of data normalization on unsupervised continuous classification of land forms," International Geoscience and Remote Sensing Symposium, 2003.
- [27] L. A. Shalabe, and Z. Shaban, "Normalization as a preprocessing engine for data mining and the approach of preference matrix," International Conference on Dependability of Computer Systems, 2006.
- [28] M. C. P. Souto, D. S. A. Araujo, I. G. Costa, R. G. F. Soares, T. B. Ludermir, and A. Schliep, "Comparative study on normalization procedures for cluster analysis of gene expression datasets," IEEE International Joint Conference on Neural Networks, 2008.
- [29] T. Jayalakashmi, and A. Santhakumaran, "Statistical normalization and back
- [30] Propagation for classification," International Journal of Computer Theory and Engineering, vol. 3, no. 1, pp. 89-93, 2011.
- [31] V. R. Patil, and R. G. Mihta, "Impact of outlier removal and normalization approach in modified k-Means clustering algorithm," International Journal of Computer Science Issues, vol. 8, no. 5, pp 331-336, 2011.
- [32] Abdulbaqi, A., Abdulhameed, A., Obaid, A. (2021). A secure ECG signal transmission for heart disease diagnosis. International Journal of Nonlinear Analysis and Applications, 12(2), 1353-1370. doi: 10.22075/ijnaa.2021.5235.
- [33] Azmi Shawkat Abdulbaqi, Ahmed J. Obaid & Alyaa Hashem Mohammed (2021) ECG signals recruitment to implement a new technique for medical image encryption, Journal

- of Discrete Mathematical Sciences and Cryptography, DOI: 10.1080/09720529.2021.1884378.
- [34] Azmi Shawkat Abdulbaqi, Ahmed J. Obaid & Maysaa Hameed Abdulameer (2021) Smartphone-based ECG signals encryption for transmission and analyzing via Io MTs, Journal of Discrete Mathematical Sciences and Cryptography, DOI: 10.1080/09720529.2021.1958996.
- [35] Shahab S., Agarwal P., Mufti T., Obaid A.J. (2022) SIoT (Social Internet of Things): A Review. In: Fong S., Dey N., Joshi A. (eds) ICT Analysis and Applications. Lecture Notes in Networks and Systems, vol 314. Springer, Singapore. [https://doi.org/10.1007/978-981-16-5655-2\\_28](https://doi.org/10.1007/978-981-16-5655-2_28).